

ARIES SPECIFICATIONS

CONSTRUCTION

- Construction Type V
- Educational / Commercial / Residential
- Load Min: 50-Floor / 20-Roof / 90-Wind
- Frame Systems: Steel Frame Systems (Perimeter/True MOD Options)
- Floor Joist: Wood Sized Accordingly
- Decking: Minimum ¾" T&G Single Layer
- Walls: Wood Stud Grade
- Sheathing: As required by Region
- Trusses: Engineered as required
- Insulation: Per Code

EXTERIOR

- Siding: HI-RIB Steel or Panels
- Roofing: Steel, EPDM or Shingles
- Mansard: Optional
- Gutters: Optional
- Doors: Steel w/Steel Jambos
- Hardware: Grade 2
- Windows: Low E DIG Operable
- Mini-Blinds: Optional
- Trim: Deluxe Package

INTERIOR

- Floor Covering: 1/8" VCT or Carpet with Resilient Flooring in RR's and Wet Areas
- Wall Covering: Vinyl Covered Gypsum w/FRP in Wet Areas
- Ceiling: Hard Deck or Suspended Ceiling
- Doors: Wood w/Pre-Finished Jambos
- Hardware: Grade 2
- Windows: Optional
- Trim: Deluxe Package
- Support Columns: per plan

MECHANICAL

- HVAC: Wall Mount Electric, sized per plan
- Insulated Ductwork
- Adjustable Diffusers
- Programmable T-Stats
- Exhaust: Fans According to Code

ELECTRICAL

- Service: Single Phase 120/240
- Loads: Sized according to Code
- Raceway: Romex or Conduit per Code
- Receptacles: 20AMP 12' Spacing
- Equipment / Appliance Recepts per Plan
- Switching: Toggle Type
- Interior Lights: Diffused Type
- Exterior Lights: Globe w/Photo Cell
- Junction Boxes: (4) per module

PLUMBING

- Water Lines: PEX or Copper per Code
- Waste Lines: PVC per Code
- Water Heaters: Electric
- Water Closets: White China Tank Type
- Urinals: per plan
- Partitions: Metal per plan
- RR Sinks: Wall Mount ADA
- Use Sinks: Stainless per plan
- Utility Sink: Fiberglass per plan

LIFE SAFETY

- Exit Lights per Code
- Emergency Lights per Code
- Fire Extinguishers: Optional
- Fire Alarm: Optional
- Fire Suppression: Optional
- Fire Rating: Optional

FF & E

- Sanitary Supplies: Optional
- Mirrors: Optional
- Signage: Optional
- Furniture: Optional
- CR Fixtures: Optional
- Casework: Optional



SERVICES / CLARIFICATIONS

CODES / LABELS

- Modular buildings are built in accordance with federal building mechanical, plumbing and electrical codes as well as state codes where the building will be temporarily or permanently located. (Local Codes excluded)
- Minimum Loads are utilized for base specifications
- State Seals
- MBI Seals

SERVICES (See Option)

- | | |
|--|---|
| <ul style="list-style-type: none"> • Manufacturing • Leasing • Financing • A & E Services • Delivery & Relocation • Installation | <ul style="list-style-type: none"> • ADA Access • Site Construction • Utilities • Site Improvements • Refurbishment • Buy-Backs |
|--|---|

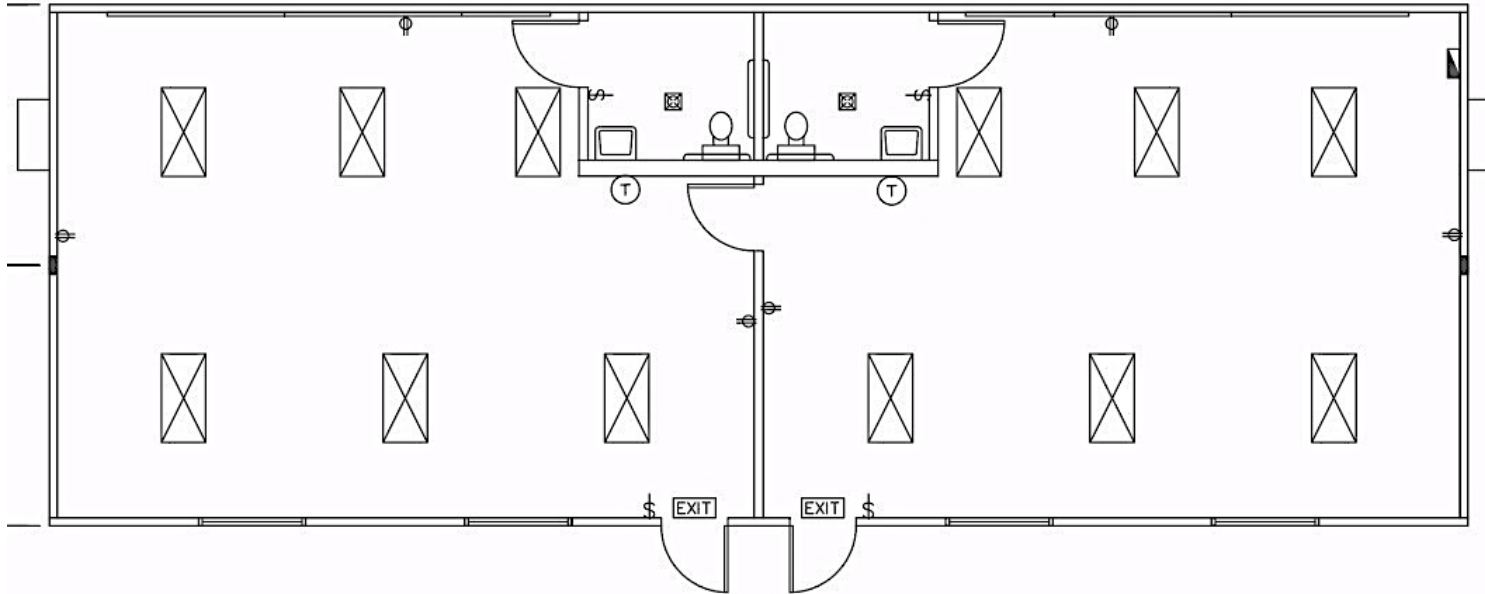
EXCLUSIONS

- 1.ARIES excludes all state, federal and local taxes.
- 2.ARIES excludes bonding in pricing.
- 3.Insurance during the lease is by the Customer.

CLARIFICATIONS

- 1.ARIES assumes owner will provide a clear and accessible site to allow for the delivery and installation of modular sections using standard modular industry vehicles and equipment.
- 2.ARIES does not include unknown or unforeseen events such as lack of natural resources, driver wait time, escorts, customer preparedness, or site preparations unless stated otherwise herein of which the Owner will be responsible for any associated cost impacts.
- 3.ARIES does not include Engineering beyond standard Modular Engineering Packages for State Modular Certification; unless stated otherwise herein.
- 4.ARIES does not include applicable site development work up to building line including, but not limited to: parking, entries, sidewalks, site plumbing (water and sewer), site power (electrical), signage, landscaping, and fencing; unless stated otherwise herein.
- 5.ARIES does not include services, manifolds, piping, lifts, meters, valves, connections, etc. to site water and waste; unless stated otherwise herein.
- 6.ARIES does not include services, manifolds, conduits, panels, meters, disconnects, connections, etc. to site electrical or gas services; unless stated otherwise herein.
- 7.ARIES does not include any voice, data, security, notification, fire alarm or fire suppressions systems; unless stated otherwise herein.
- 8.ARIES does not include, FFE, signage, HVAC testing and balancing, condensation drains, gutters, downspouts, etc.; unless stated otherwise herein.





24' x 64' DOUBLE CLASSROOM - WET

1,536 Square Feet

General Notes

Ownership Notes:

This document and the ideas and designs incorporated herein, as an instrument of service, is the property of Aries Building Systems. And is NOT to be used, in whole or in part, for any other project without the written permission of Aries Building Systems.

Concept Notes:

This document is a "Conceptual" drawing only. Changes may occur due to code compliance. The CLIENT is responsible for any cost changes resulting from these changes.

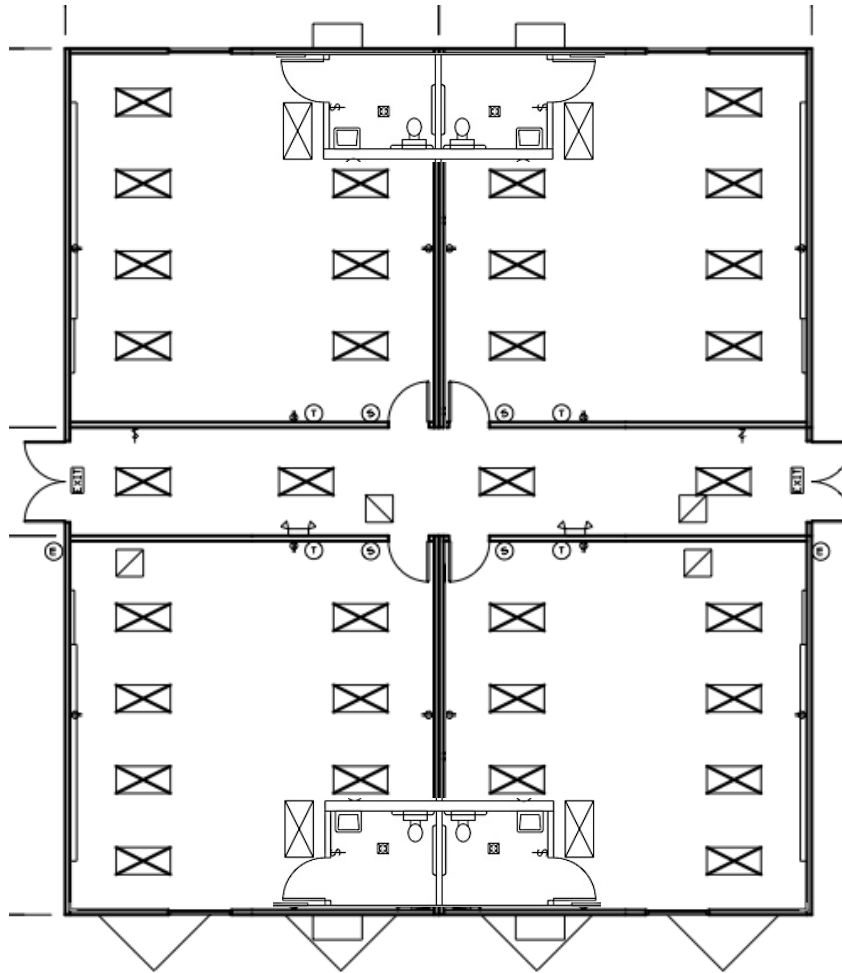


Aries Building Systems

12600 Featherwood Suite 450
Houston, TX 77034
p. (281) 448-2800
www.ariesbuildings.com

DWG No.

DA08



56' x 64' FOUR CLASSROOM – INDIVIDUAL RR

3,584 Square Feet

General Notes

Ownership Notes:

This document and the ideas and designs incorporated herein, as an instrument of service, is the property of Aries Building Systems. And is NOT to be used, in whole or in part, for any other project without the written permission of Aries Building Systems.

Concept Notes:

This document is a "Conceptual" drawing only. Changes may occur due to code compliance. The CLIENT is responsible for any cost changes resulting from these changes.

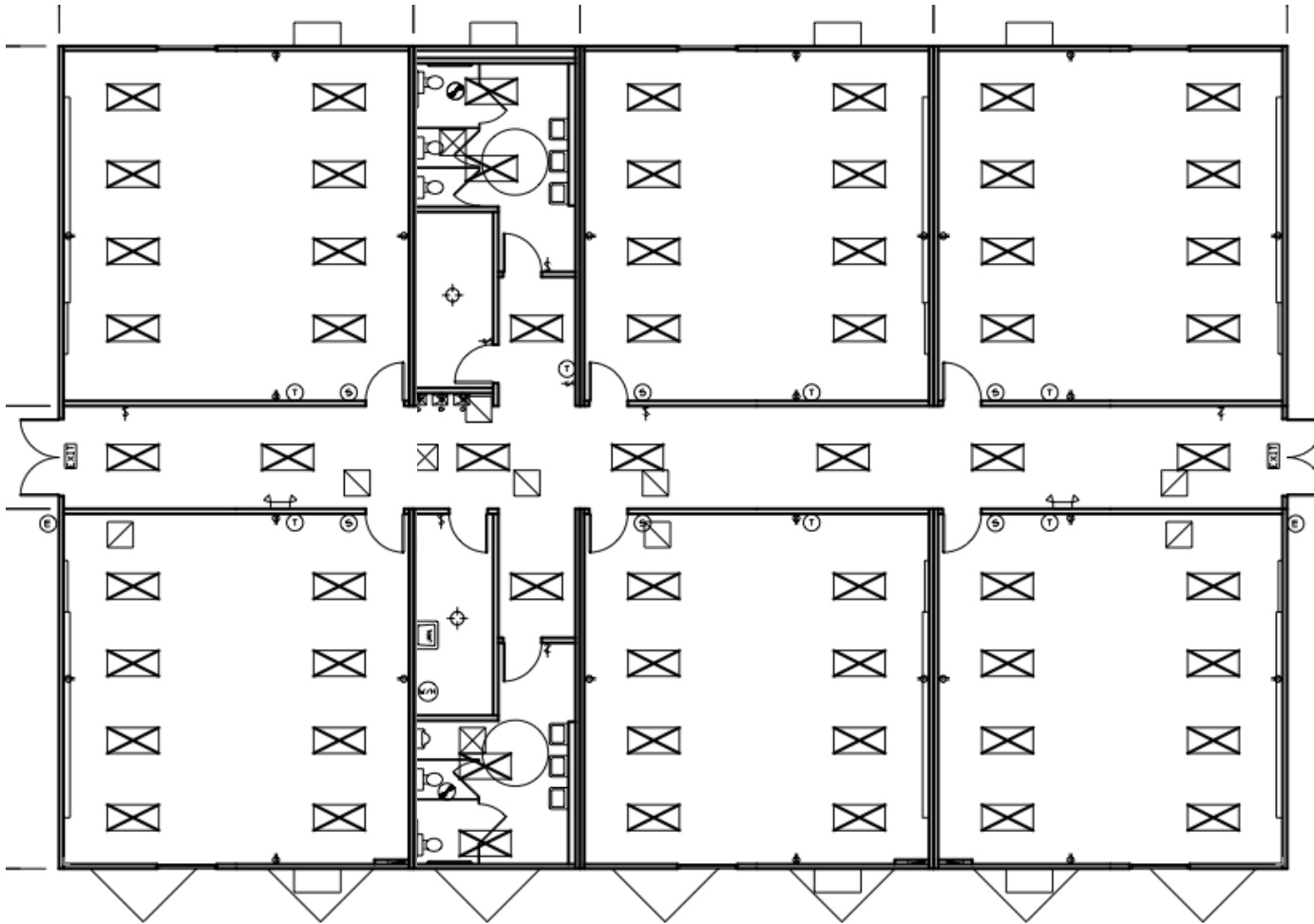


Aries Building Systems

12600 Featherwood Suite 450
Houston, TX 77034
p. (281) 448-2800
www.ariesbuildings.com

DWG No.

DA10



98' x 64' SIX CLASSROOM - WET

6,272 Square Feet

General Notes

Ownership Notes:

This document and the ideas and designs incorporated herein, as an instrument of service, is the property of Aries Building Systems. And is NOT to be used, in whole or in part, for any other project without the written permission of Aries Building Systems.

Concept Notes:

This document is a "Conceptual" drawing only. Changes may occur due to code compliance. The CLIENT is responsible for any cost changes resulting from these changes.

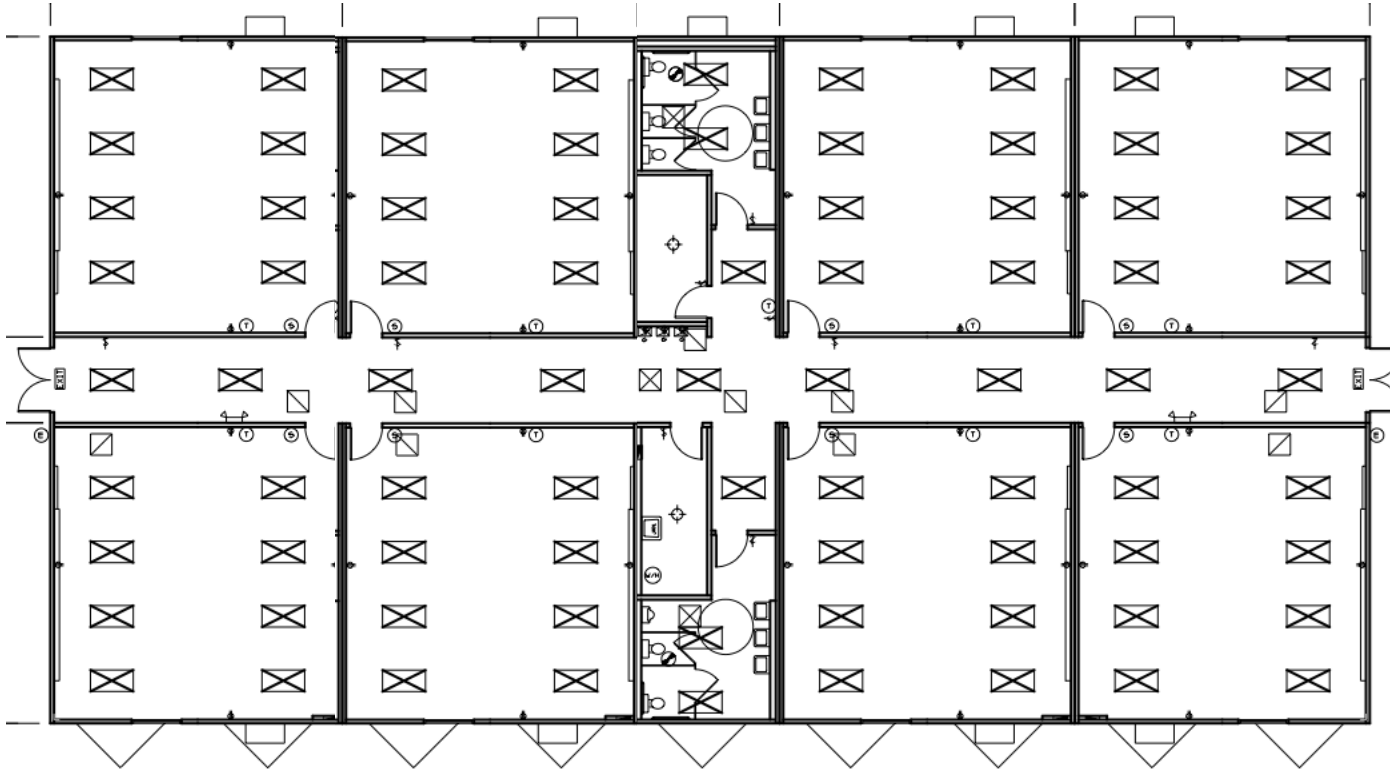


Aries Building Systems

12600 Featherwood Suite 450
Houston, TX 77034
p. (281) 448-2800
www.ariesbuildings.com

DWG No.

DA12



126' x 64' EIGHT CLASSROOM - WET

8,064 Square Feet

General Notes

Ownership Notes:

This document and the ideas and designs incorporated herein, as an instrument of service, is the property of Aries Building Systems. And is NOT to be used, in whole or in part, for any other project without the written permission of Aries Building Systems.

Concept Notes:

This document is a "Conceptual" drawing only. Changes may occur due to code compliance. The CLIENT is responsible for any cost changes resulting from these changes.

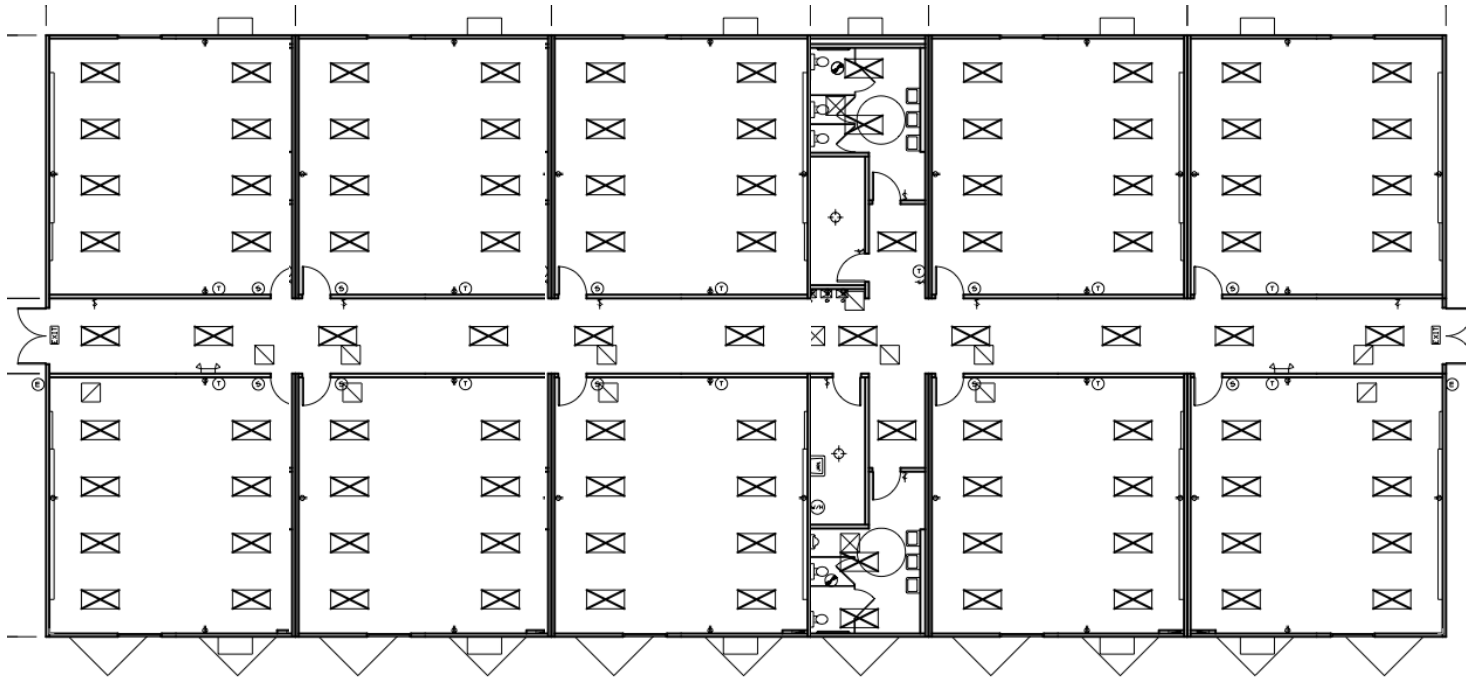


Aries Building Systems

12600 Featherwood Suite 450
Houston, TX 77034
p. (281) 448-2800
www.ariesbuildings.com

DWG No.

DA14



154' x 64' TEN CLASSROOM - WET

9,856 Square Feet

General Notes

Ownership Notes:

This document and the ideas and designs incorporated herein, as an instrument of service, is the property of Aries Building Systems. And is NOT to be used, in whole or in part, for any other project without the written permission of Aries Building Systems.

Concept Notes:

This document is a "Conceptual" drawing only. Changes may occur due to code compliance. The CLIENT is responsible for any cost changes resulting from these changes.



Aries Building Systems

12600 Featherwood Suite 450
Houston, TX 77034
p. (281) 448-2800
www.ariesbuildings.com

DWG No.

DA16